

**MAQUET**  
GETINGE GROUP

**FLOW-i ANESTHESIA DELIVERY SYSTEM  
MAKING THE EXCEPTIONAL ROUTINE**

CRITICAL CARE





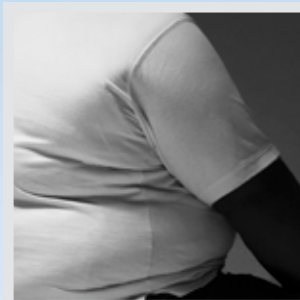
*The elderly patient*



*The neonatal patient*



*The thoracic patient*



*The morbidly obese patient*



*The critically ill patient*

## FLOW-i PERFORMANCE WHEN YOU NEED IT MOST

**Routine procedures are not always routine.** Hospitals are being challenged by rapidly changing patient demographics and a growing number of complex procedures. The need for uninterrupted ventilation and the widest possible range of support capabilities during anesthesia – regardless of changing conditions – is more important than ever.

**MAQUET FLOW-i® is the innovative resource** for today's anesthesiologists, providing the responsive support they need regardless of rapid changes in patient or surgical conditions. The modular, ergonomic unit seamlessly combines powerful ventilatory capabilities evolved from the SERVO platform with unique anesthetic delivery and management capabilities. FLOW-i empowers anesthesiologists with the ability to maintain optimal anesthetic parameters with no interruption to advanced ventilatory support.

**MAQUET – The Gold Standard.** FLOW-i is a product of MAQUET's leadership in OR and ICU medical technology development. For more than 40 years, MAQUET has been setting mechanical ventilation standards with the high performance SERVO platform. Today, that same commitment and experience is being applied to anesthesia, leading to innovations such as FLOW-i: another expression of our ongoing commitment to develop solutions that improve patient care.



## FLOW-i THE POWER TO PERFORM ON DEMAND

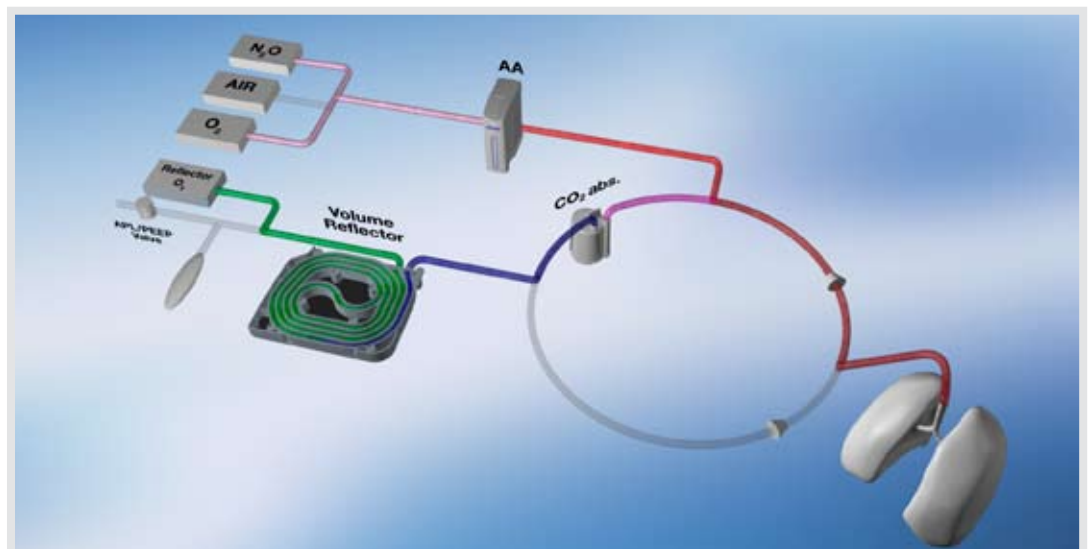
Ideally, the ventilatory capabilities of anesthesia systems should be able to maintain flow rate regardless of lung compliance and airway resistance and be easy for the patient to trigger. Until now, anesthesia delivery systems have not had the power and performance characteristics required to deliver on these criteria effectively.

**FLOW-i changes all that.** Based on the core technology of the MAQUET SERVO ventilator series, FLOW-i is able to maintain constant gas flow despite increasing airway pressure, provide high flow rates quickly, allow quick and easy triggering and keep PEEP constant and accurate.

In short, FLOW-i delivers all the ventilatory advantages you would expect from a system born of the SERVO platform, while allowing you to maintain optimal anesthetic parameters.

**Uninterrupted ventilation.** FLOW-i takes advantage of a MAQUET innovation called the MAQUET VOLUME REFLECTOR® (VR). The VR is a re-breathing device that allows partial re-breathing of exhaled gases. In low fresh gas flow settings and in the eventual case of leaks, the circuit will never be empty – ensuring ventilation will remain uninterrupted regardless of surgical constraints, changing conditions or patient position. The VR is oxygen-driven by design. If there are leaks, the circuit is saturated with oxygen, minimizing the risk of a potentially dangerous hypoxic mixture.

*The FLOW-i rebreathing system is optimized with a Volume Reflector, which together with the SERVO-controlled gas modules enables better ventilation performance compared to traditional bag-in-bottle and piston-operated systems.*





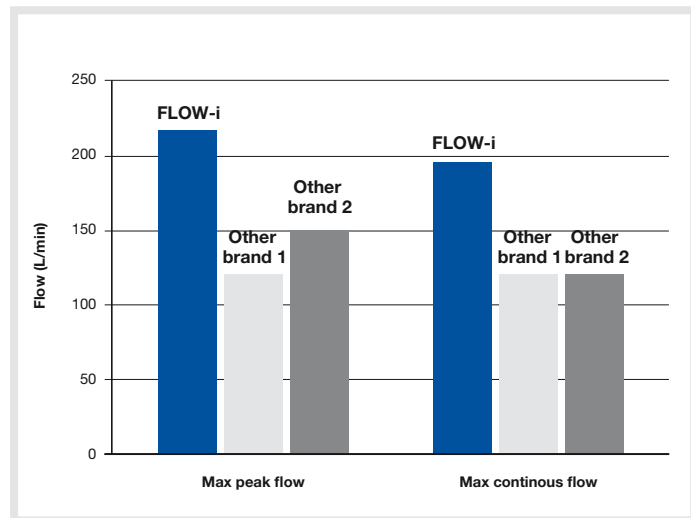
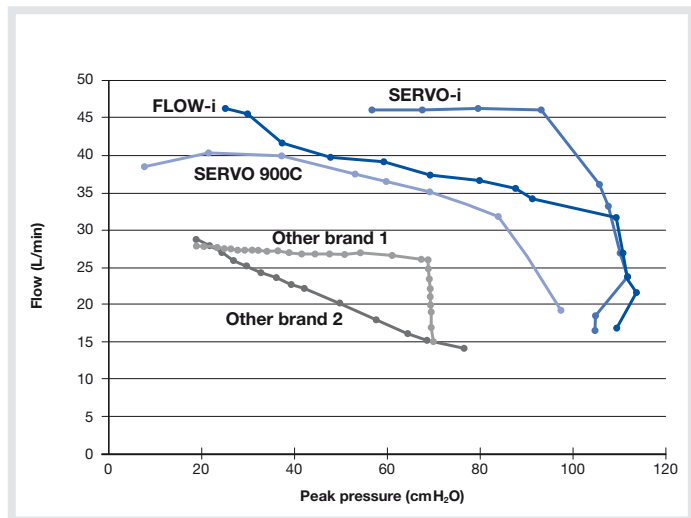
# FLOW-i SIMPLY MORE POWERFUL

**High ventilatory power capabilities** are essential to optimal anesthesia care. They help prevent complications and avoid interventions, especially for patients suffering from underlying illnesses and complicating factors

The additional power of FLOW-i can help avoid worsening of the patient's respiratory condition during surgery, minimize post-operative pulmonary complications and ensure maximum patient safety at all times.

**1. FLOW-i has the capability to deliver the set tidal volume** in spite of high abdominal and thoracic pressure thus avoiding hypoventilation.

**2. FLOW-i has the capability to deliver high inspiratory flow** both peak and continuously and thus adopt to individual patient demands.



Internal tests. MAQUET Critical Care AB.

■ **FLOW-i can deliver a fast rise time.** This facilitates the pressure in trachea to reach set value.

■ **FLOW-i offers low expiratory work of breathing,** which makes it easier to exhale. This enables Pressure Support ventilation to be suitable for induction.

■ **FLOW-i offers a high performance trigger,** which makes Pressure Support ventilation possible to be used in pediatric procedures.

■ **FLOW-i controls the pressure drop during expiration** very fast. This gives quick and accurate PEEP control, minimizing the risk for auto PEEP at higher respiratory rates.



**Powerful interventions.** FLOW-i is able to optimize pressure and flow and enable fast, powerful interventions. This is achieved by a low internal volume and a powerful flow and pressure generator. Less internal volume also enables rapid changes in gas concentrations when needed.

**Anesthesia simplified.** The lightweight electronic injection vaporizers are placed centrally on the FLOW-i. Switch between agents is performed by a touch on the intuitive display. The vaporizers can be refilled while still slotted in the machine and with one still in use. They are checked during the system checkout, which means no need for calibration. The Desflurane vaporizer doesn't need to be heated up before use.

**Cost-effective agent delivery.** FLOW-i is designed to minimize wastage and unnecessary use of agent. During automatic ventilation, the main volume of set fresh gas is delivered during the inspiration phase and the fresh gas flow is limited to set minute volume.

**Wide range of consumables,** for optimal performance with FLOW-i. MAQUET disposable and reusable kits of breathing circuits and masks are designed to ensure excellent patient comfort and safety.







## FLOW-i OPTIMIZING YOUR WORKFLOW

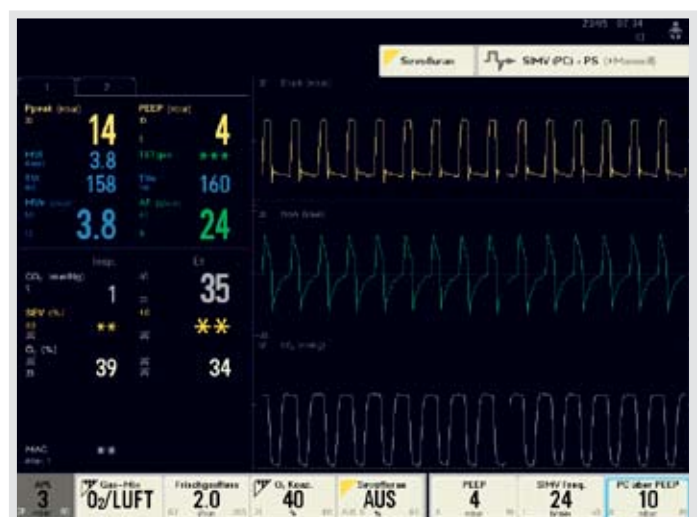
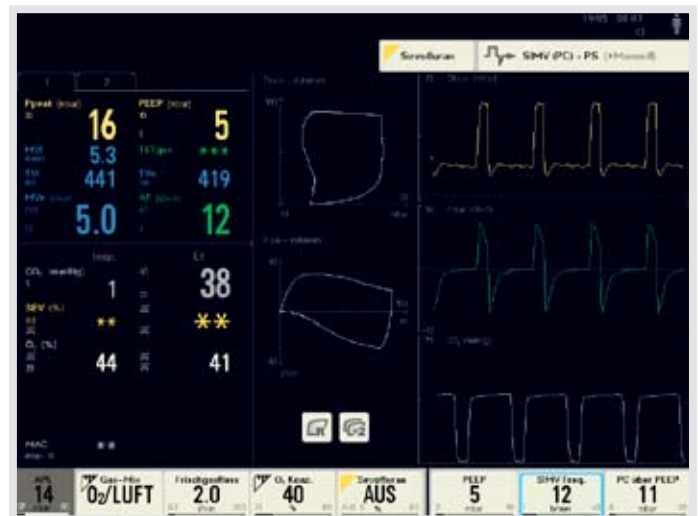
### FLOW-i is designed from a clinical hands-on perspective.

This means it supports staff by being easy to understand and use throughout the whole workflow, even in challenging circumstances.

**Intuitive.** FLOW-i features an ergonomic and uncluttered interface that minimizes the risk for information overload. Menus and submenus are organized intuitively. On the control panel, measured parameters are always displayed to the left and menus to the right, allowing the user to quickly access the current status of the patient. The touch screen enables options to be selected with just a touch, and all knobs and controls are intelligently placed – exactly where one would expect to find them.

**Convenient.** FLOW-i is available in three models – one with extra storage possibilities, one for ceiling pendants and one with electronic height-adjustability. All versions include a rotatable arm for flexible screen positioning, tiltable screens to enhance visibility and vertical and horizontal rails for mounting auxiliary equipment. With any FLOW-i, it is possible to exchange the positioning of the control panel and patient monitor according to clinical needs and procedures.

*FLOW-i measured parameters and menus are formatted to provide a quick and comprehensive overview while minimizing “information overload.”*



## FLOW-i HIGHER PERFORMANCE TODAY AND TOMORROW

One of the great advantages of FLOW-i is the flexibility it offers in addressing both current and future potential needs. Like the SERVO series ventilators it is inspired from, FLOW-i is a modular platform, offering the possibility to easily add functions and accessories as your requirements change.

**Freedom.** With FLOW-i, there are options for configuring the system to your exact needs without being tied to a single supplier. For instance, FLOW-i can be fitted with many different patient monitors currently available on the market, a flexibility feature that also gives you the option of reusing your existing monitors. New existing features and options can be easily added to FLOW-i at any time.

**Connectivity.** FLOW-i is an electronic anesthetic delivery system with full data transfer capabilities. The unit's robust communication platform seamlessly interfaces all FLOW-i parameters with patient monitors, PDMS and HIS, enabling the transfer of essential clinical information.

**Future-proof.** MAQUET is applying the same development principles to FLOW-i as we always have to SERVO ventilators. The open platform of FLOW-i means the system is always ready for new features as they become available, protecting your investment and enabling staff to remain familiar and effective with the same platform today and in the future.



## FLOW-i WITH MCARE SECURING PERFORMANCE FROM DAY ONE

**MAQUET MCare® is a holistic service concept** that ensures FLOW-i will operate at peak performance throughout its lifecycle, and that your staff can take advantage of all its features in the best possible way. Beyond parts, training, service and maintenance, MCare offers innovative solutions such as unique online services and support and ongoing equipment upgrades.

**Access to the MCare portal.** The MCare portal is a unique offer from MAQUET. Your team can review their own FLOW-i systems, follow up on service and maintenance schedules, get an instant view of service and user documents and get the latest news about the system. The portal also provides easy access to e-learning modules.

**Cost and risk management.** At MAQUET, we understand the importance of helping facilities manage ever-escalating health care costs. With MCare services, FLOW-i owners enjoy cost certainty on consumables and even the cost of the service program for its entire duration.

**Complete flexibility.** Clients can customize MCare to fit the various strategies different hospitals have for system maintenance. A MAQUET representative will be pleased to help shape the MCare solution that best suits your facility's needs.

	MAQUET MCare® Services & support	Customize your MCare®
	Telephone support	Optional
	Preventive service	Standard configuration
	Corrective service	Standard configuration
	Selected spare parts	Standard configuration
	Maintenance kits	Optional
	Selected consumables	Standard configuration
	Updates	Standard configuration
	Technical training	Standard configuration
	User training	Optional
	Emergency back-up	Standard configuration
	Upgrades	Standard configuration
	Quality check	Standard configuration
	Consumables discount	Standard configuration
	Software options discount	Standard configuration
	Accessories discount	Standard configuration
	MCare Remote Service	Standard configuration
	MCare Portal	Standard configuration
	E-learning technical	Standard configuration
	E-learning user	Standard configuration

*Local variations of MCare may occur. For more information contact your local MAQUET office or visit [www.maquet.com](http://www.maquet.com)*



Cost & risk control – securing product life cycle reliability

# MAQUET

GETINGE GROUP

Maquet Critical Care AB  
171 54 Solna, Sweden  
Phone: +46 8 730 73 00  
[www.maquet.com](http://www.maquet.com)

**The following are registered or pending trademarks of Maquet Critical Care AB: MAQUET FLOW-i, MAQUET VOLUME REFLECTOR, MAQUET MCare and SERVO-i.**

The product FLOW-i may be pending regulatory approvals to be marketed in your country. Contact your local MAQUET representative for more information.

GETINGE GROUP is a leading global provider of products and systems that contribute to quality enhancement and cost efficiency within healthcare and life sciences. We operate under the three brands of ArjoHuntleigh, GETINGE and MAQUET. ArjoHuntleigh focuses on patient mobility and wound management solutions. GETINGE provides solutions for infection control within healthcare and contamination prevention within life sciences. MAQUET specializes in solutions, therapies and products for surgical interventions and intensive care.