

SOL-CARE™ Safety Blood Collection Needle

with or without pre-attached holder

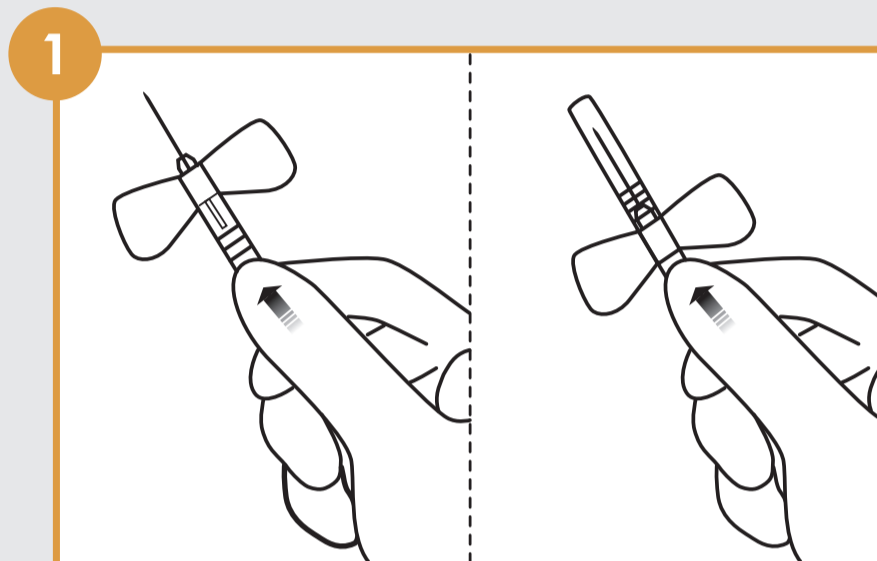


How to activate needle safety mechanism.

Each device features a simple safety mechanism that should be activated immediately after blood withdrawal is complete, thereby reducing the risk of needlestick injury.

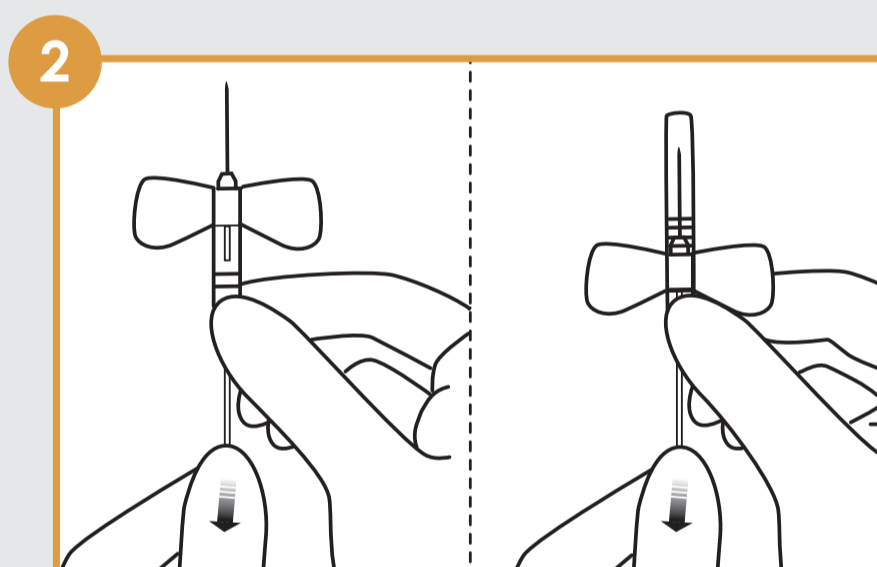


You have a choice of three ways to activate the safety mechanism, depending on your preference (either single or two-handed) and/or the position of the needle:



One-handed activation

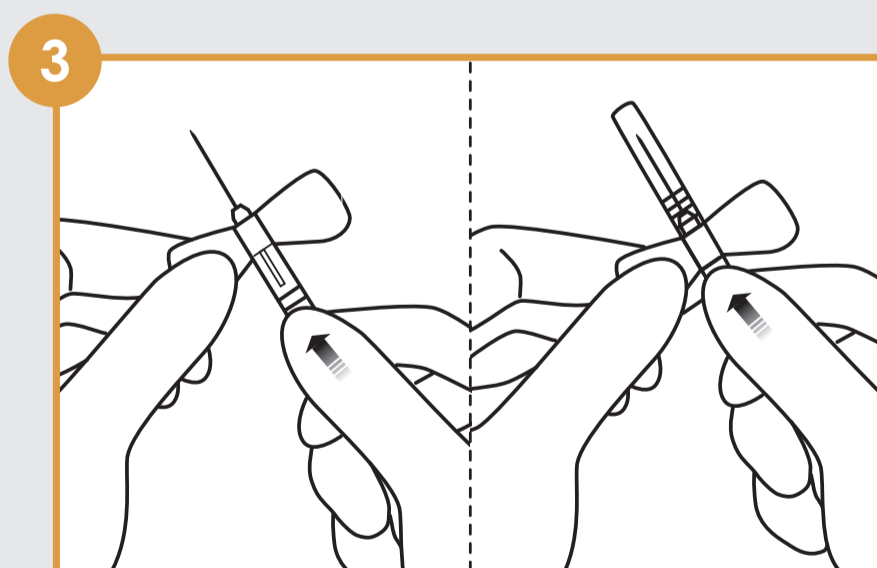
Hold the tubing steady with your third, fourth and fifth fingers against your palm, and use your thumb and index finger to push the safety shield forward until you hear a click.



Two-handed activation

Option A:

Hold the safety shield steady with your thumb and index finger and use your other hand to pull the tubing back until you hear a click.



Two-handed activation

Option B:

Hold the wing between the thumb and index finger of one hand and use the other hand to push the safety shield forward until you hear a click.

For more information about SOL-CARE™ Safety Blood Collection Needles, please contact your local SOL-MILLENNIUM® representative.

Sol-Millennium Europe Sp. z o.o.
Twarda 18, PL-00105 Warsaw, Poland
Tel: +48 22 202 67 23, Fax: +48 22 202 67 19
info@sol-m.com

sol-m.com

2017-07-SBCN-0160

 SOL-MILLENNIUM®
Building a Healthier Tomorrow