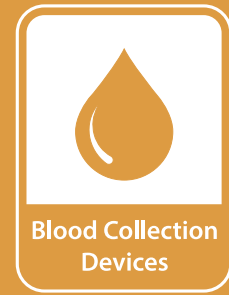


SOL-M™ Multi-sample Needle

SOL-M™ Blood Collection Tube Holder

SOL-M™ Blood Culture Holder



Discover our range of Multi-Sample Needles for blood collection.

SOL-M™ Multi-sample Needle makes it possible to collect several samples with a single vein puncture.

- **Low-angle bevel design** allows easy penetration.
- **Color-coded caps and hubs** allow easy identification of needle gauge size.
- **Compatible with all standard holders.**
- **Not made with natural rubber latex.**



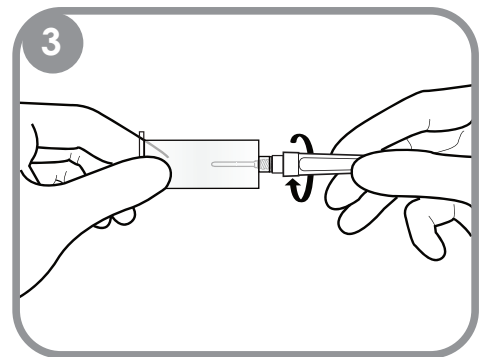
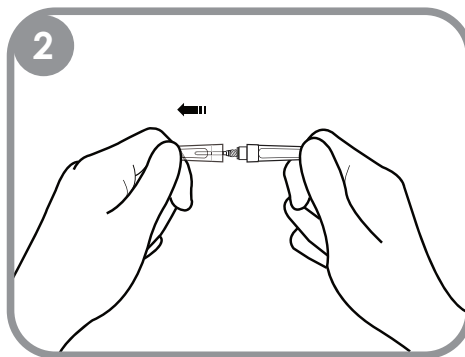
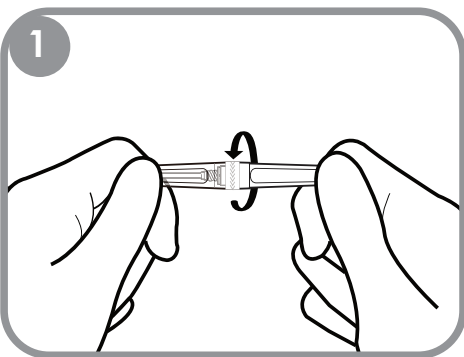


SOL-M™ Multi-sample Needle

SOL-M™ Multi-sample Needle

Reference number	Needle outer diameter		Needle length	
	Gauge	Millimeters	Inches	Millimeters
110201020001	23G	0.6 mm	1"	25 mm
110201020002	22G	0.7 mm	1"	25 mm
110201020003	22G	0.7 mm	1 1/2"	40 mm
110201020004	21G	0.8 mm	1"	25 mm
110201020005	21G	0.8 mm	1 1/2"	40 mm
110201020006	20G	0.9 mm	1"	25 mm
110201020007	20G	0.9 mm	1 1/2"	40 mm

Sales Unit: 100 pcs/Box; 1000 pcs/Case



Also available Blood Collection and Blood Culture Holders



Reference number	Description	Inner Bag/Case (pcs)
110201050001	SOL-M™ Blood Collection Tube Holder	250/1000
110201050002	SOL-M™ Blood Culture Holder	40/320

For more information about SOL-M™ Multi-Sample Needles, please contact your local SOL-MILLENNIUM® representative.

Sol-Millennium Europe Sp. z o.o.
 Twarda 18, PL-00105 Warsaw, Poland
 Tel: +48 22 202 67 23, Fax: +48 22 202 67 19
 info.eu@sol-m.com

sol-m.com

2018-03-MSN-0228

